

# Data sheet light

## Motion Sensor Digital

P/N D25001/D25003

The data sheet light contains limited information on the product. See the full data sheet for more information.



### ELECTRICAL CHARACTERISTICS - INPUT

Name	Value	Unit	Condition
Universal input voltage	3,3	V <sub>dc</sub>	± 10%
Power consumption	< 1	mW	

### INTERFACES

Name	Value	Condition
Citygrid InFix24 Controller	Powered by the InFix24 Controller	

### PROTECTION

Specification item	Value	Unit	Condition
IP rating	IP64		
IK rating	IK07		Top and side impact, excluding sensor lens

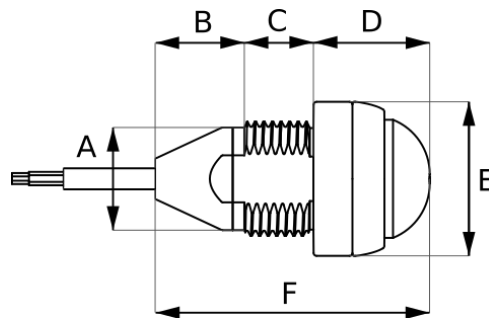
### TEMPERATURE & HUMIDITY

Type	Value	Unit	Condition
Operational temperature	-20 to +60	°C	Ambient
Storage temperature	-30 to +80	°C	Ambient

### DIMENSIONS & WEIGHT

Item	Value	Unit	Comment
A	20	mm	

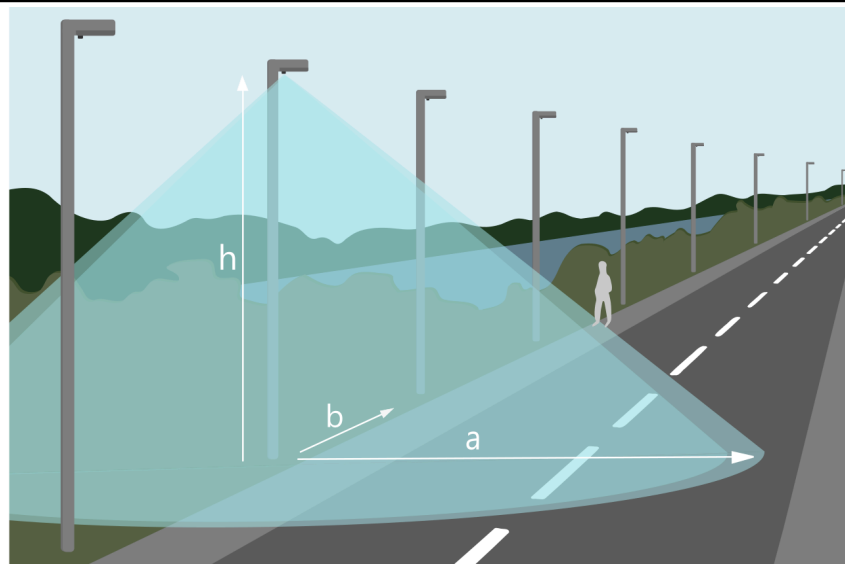
B	16	mm	
C	12	mm	
D	20	mm	
E	27	mm	
F	48	mm	
Weight	0,023	kg	65 cm cable version



## MOTION DETECTION

Details	Value	Unit	Condition
Detection technology	PIR		
Recommended installation height	4 to 8	m	

## DETECTION AREA



Height h	Length a	Length b	Unit
4	4,2	5,0	m
5	5,3	6,3	m
6	6,3	7,5	m
7	7,1	7,5*	m
8	7,1*	7,1*	m

\*The maximum detection range from the sensor is 10 metres. When the sensor is mounted higher than 6 metres the detection area at ground level shrinks slightly due to the sensor detection range. In those cases the detection lengths are measured 1 metre above the ground instead of at ground level.



### CAUTION

- Avoid touching live parts.
- Do not use the product with damaged housing or connectors.
- Do not service when the mains voltage is connected. This includes connecting or disconnecting the LED driver.
- The product should be installed by a trained or qualified person.

